

# **CONTROL OF THE RICE ROOT-KNOT NEMATODE *MELOIDOGYNE GRAMINICOLA* USING RICE PLANTS AS TRAP CROPS**

Torrini G.<sup>1</sup>, Sacchi S.<sup>2</sup>, Marianelli L.<sup>1</sup>, Mazza G.<sup>1</sup>, Fumagalli A.<sup>3</sup>,  
Cavagna B.<sup>3</sup>, Roversi P.F.<sup>1</sup>, Ciampitti M.<sup>3</sup>

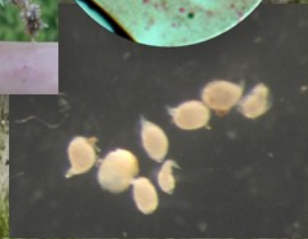
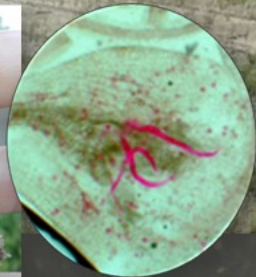
<sup>1</sup>CREA Research Centre for Plant Protection and Certification, 50125 Firenze, Italy;

<sup>2</sup>Fondazione Minoprio Phytopathological Laboratory. Vertemate Con Minoprio, Como (Italy);

<sup>3</sup>Lombardy Region - DG Agricoltura Servizio Fitosanitario Regionale, Milan (Italy)

# Meloidogyne graminicola

*Meloidogyne graminicola* is one of the most important damaging nematodes for rice cultivation throughout the world.



2016



First interception  
in EPPO Countries



# EXPERIMENTAL AREA

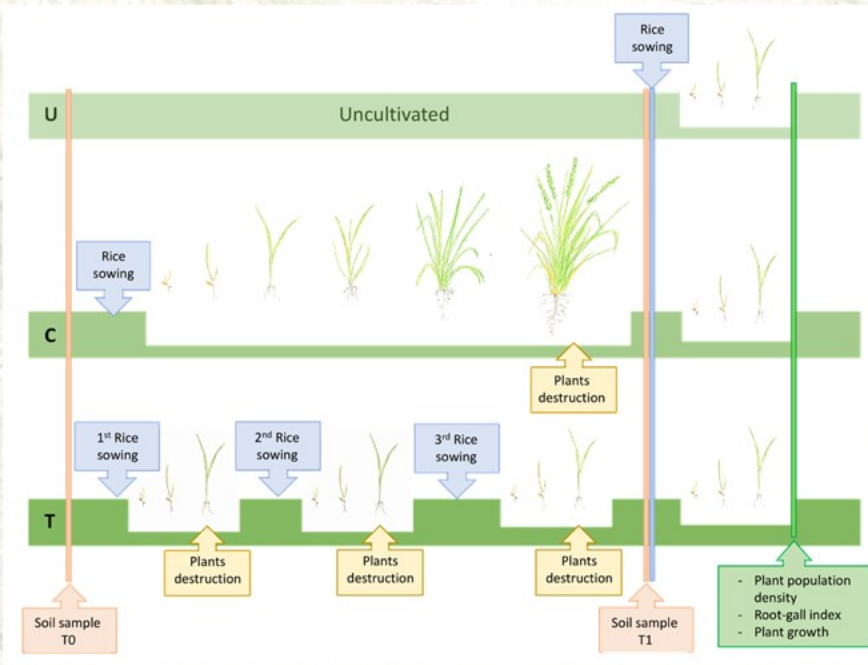


Rice-cultivated area at the Cascina Scalina farm, located in Garlasco (Pavia, Lombardy region, Italy)

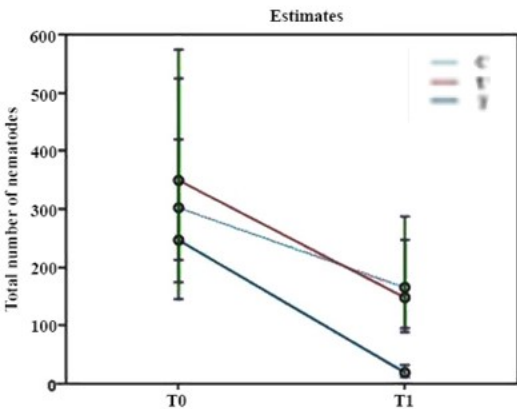
# MATERIAL AND METHODS

Five plots for three different management approaches were staked out:

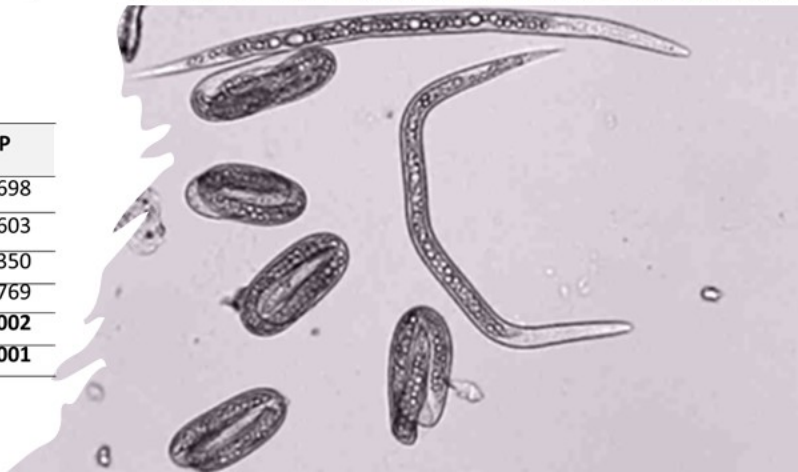
- **Uncultivated (U)**
- **Control (C)**: rice was sown and left to grow until the end of the three cycles in treated plots.
- **Treated (T)**: three separate cycles of rice production where plants were sown and destroyed each time at the second leaf stage.



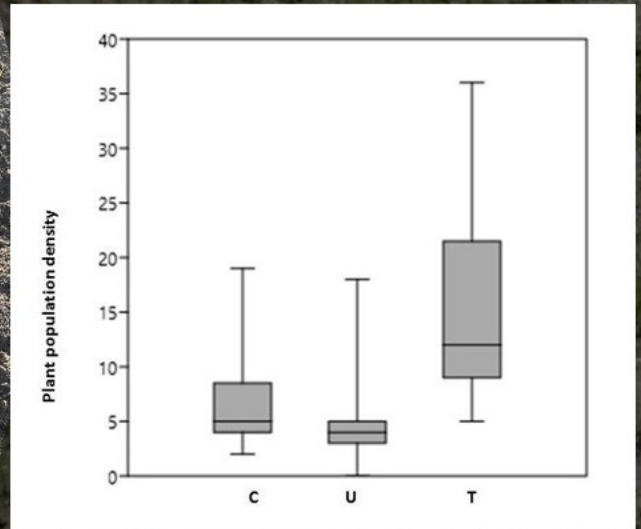
# Evaluation of Nematode Density in the Soil

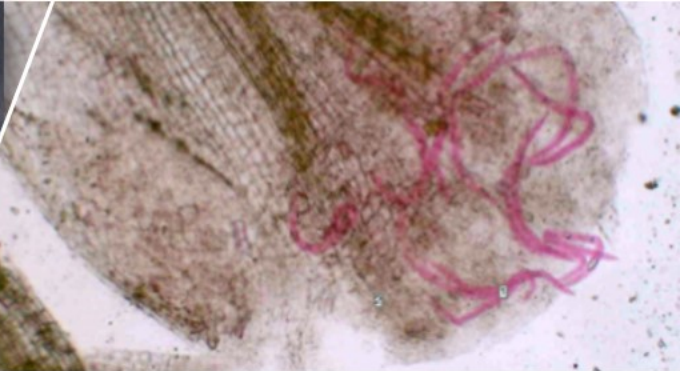


Time	Pairwise comparisons	P
T0	C vs U	0.698
T0	C vs T	0.603
T0	U vs T	0.350
T1	C vs U	0.769
T1	C vs T	<b>0.002</b>
T1	U vs T	<b>0.001</b>

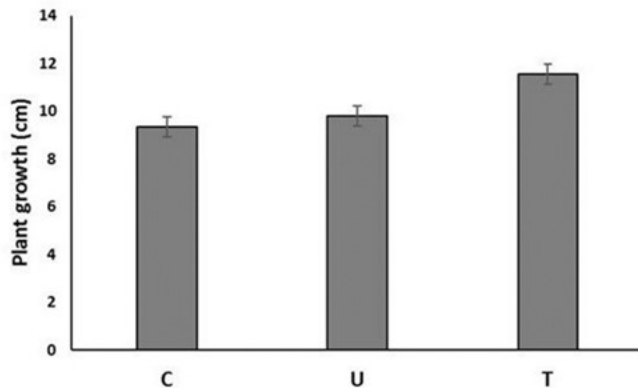
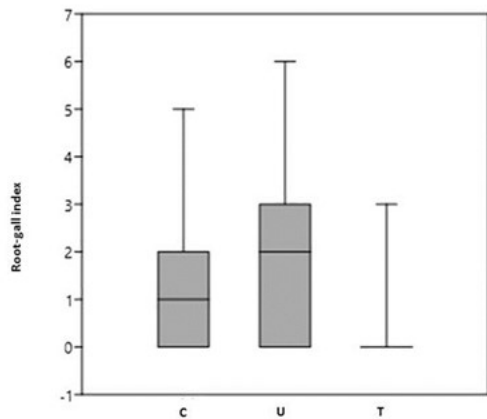


# Evaluation of the Plant Population Density





## Evaluation of the Root-Gall Index and the Plant Growth



# THANK YOU FOR YOUR ATTENTION



[giulia.torrini@crea.gov.it](mailto:giulia.torrini@crea.gov.it)